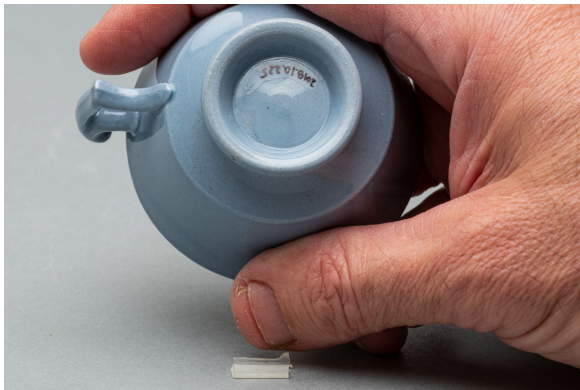


# Teacup

<https://collections.pacmusee.qc.ca/en/objects/teacup-2018-010-0225/>

Collections / From federalism to the end of the Second World War / teacup



CC BY-NC-ND 4.0 license

The cup is complete. It is circular in shape. The wall is slightly flared at the top, and the top of the rim is corrugated. The lower third of the wall is tapered towards the flat bottom. It rests on a pedestal; the junction of the foot and the wall features an incised ring. The underside of the bottom is recessed and flat. The handle is vertical. Rectangular in shape, it has an

extension at the top that curves inwards, while its junction arms with the wall curve inwards. Its ends, at its junction with the wall, are bent downwards and oval in shape. There are slight flaws in the paste and in the internal glaze; the decoration results from the grayish-blue color of the paste, which shows through the colorless glaze.

---

Accession Number 2018.10.225

Fabricant / Éditeur Spode

Date 1890 ?

Materials ceramics, fine earthenware

Measurements 4,6 x 6,836 cm

---

© Collection Pointe-à-Callière, Paul-Gaston L'Anglais fonds, 2018.010.0225

Photo by René Bouchard