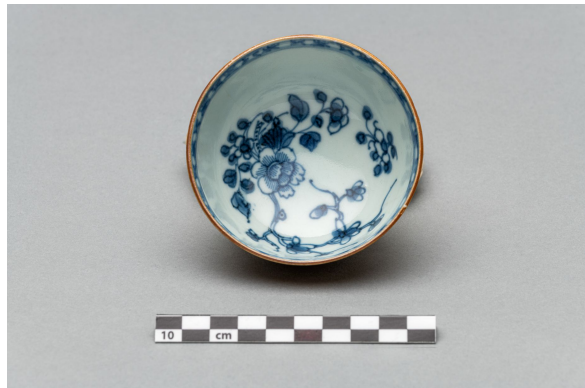


Tea bowl

<https://collections.pacmusee.qc.ca/en/objects/tea-bowl-2018-010-1195/>

Collections / From the Conquest to the founding of Canada / tea bowl



CC BY-NC-ND 4.0 license

The tea bowl is complete. It is circular in shape. In profile, the bowl has an upwardly flaring wall topped by a straight rim. The lower part of the wall is curved towards the bottom, which is flat. The bowl rests on a small annular foot. The outer rim of the foot is beveled and free of glaze. The bottom is flat and recessed; the decoration covers the outside of the bowl, as well as

the inside rim and bottom. The decoration is floral and of the outer brown coating type, known as Batavia. It is hand-painted in underglaze blue. The ribbon below the inner rim is decorated with a latticework of two similar elements repeated in alternation: a double cross and four cross points. The rendering is blurred. The decoration on the inner wall consists of a group of long, wavy leafy stems, with a ribbed central flower. The remaining part is occupied by a small, leafy, flowering stem. The entire outer surface is covered with a shiny brown iron-based coating, which also covers the top of the rim.

Accession Number 2018.10.1195

Date 1770 c

Materials ceramics, fine hard-paste porcelain from China

Measurements 5 x 8,743 cm

© Collection Pointe-à-Callière, Paul-Gaston L'Anglais fonds, 2018.010.1195

Photo by René Bouchard

On display