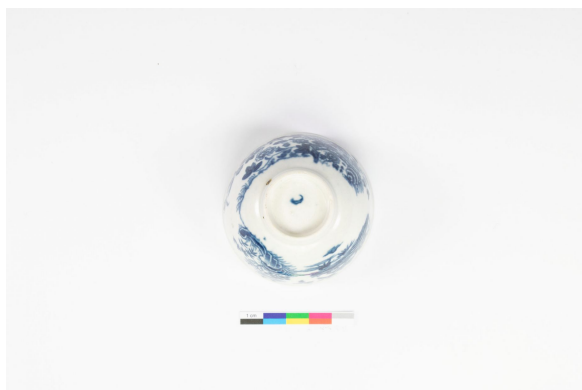


# Tea bowl

<https://collections.pacmusee.qc.ca/en/objects/tea-bowl-2018-010-0107/>

Collections / From the Conquest to the founding of Canada / tea bowl





CC BY-NC-ND 4.0 license

The bowl is complete. It is circular in shape. The wall is almost straight, topped by a slightly flared rim with a tapering top. The wall curves at the base towards the flat bottom. The bowl rests on a ring-shaped foot with a beveled outer rim. The bottom is recessed, slightly domed in the shape of a cone, with a small central nipple surrounded by an incised ring. There is a mark printed in blue below the base: C, i.e. an empty crescent. There are a few small linear marks on the inner background ; The decoration is applied by transfer printed and hand-painted; it is blue in color and features the Fence motif. The painted decoration is below the inner edge: it consists of two superimposed horizontal lines. The lines have run. The printed decoration is visible on the outer wall and on the inner background. On the outer wall, it is distributed over three aligned zones. The main decoration consists of a fence made up of a few sections: some are straight, while others are arranged in a zigzag pattern. The fence sections are cross-hatched, with a small, three-lobed opening in the center. A rock borders the fence to the right. Leafy and flowering plant stems of varying scales adjoin the fence, including a long stem extending to the left; they are cross-hatched. To the left of the fence is a small terrace made of a wavy line and covered with grass. It joins a long rock with two heads, one of which is topped by three trees, while the other portion is topped by two curved plant

stems of reed or bamboo. The other area consists of an elongated, cross-hatched island. It is surmounted by a hut with a curved straw roof, and adjoined by three trees; a lobed rock borders the island at water level. Waves made of horizontal lines strike the island and the rock. At the foot of the island are two stylized plant groups and a small emerging rock. At the top of the island fly two birds, seen in profile to the right. Their wings point backwards and downwards. The decoration on the inner background consists of a flower flanked by two leaves. The decoration is blurred.

---

Accession Number 2018.10.107

Fabricant / Éditeur John Wall, Thomas Flight

Date 1785 c

Materials ceramics, fine soft-paste porcelain from England

Measurements 4 x 6,6 cm

---

© Collection Pointe-à-Callière, Paul-Gaston L'Anglais fonds, 2018.010.0107

Photo by René Bouchard