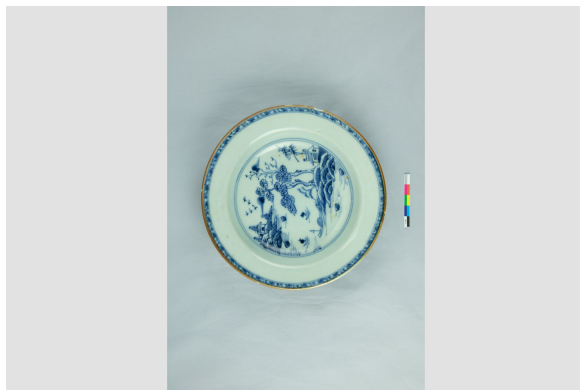


Soup plate

<https://collections.pacmusee.qc.ca/en/objects/soup-plate-2018-010-1297/>

Collections / From the Conquest to the founding of Canada / soup plate



CC BY-NC-ND 4.0 license

The plate is complete; there are some cracks around the rim. The plate is circular with a plain rim. The rim slopes slightly inwards, the sides are socked and the bottom is flat and recessed. The plate rests on a small ring-shaped foot, which is free of glaze ; The decoration is hand-painted in blue underglaze. It is of the lacustrine type. The painted decoration is visible on

the inner rim and on the inner base. The decoration on the rim is composed of a blue braid near the rim, trimmed with a blue diamond lattice and underlined by a blue ring. The central motif is encircled by a double ring and features two islands separated by a body of water. The main island is bordered by rocks. It is home to a small building with an oriental roof, bordered by tall leafy trees, and a small boat. The second island, also bordered by rocks, is home to a small building with a gable roof and a few stylized trees. Two small sailing boats ply the water. Mountains rise in the background and stylized birds flutter in the sky. The rim of the plate is covered with iron-brown plaster.

Accession Number 2018.10.1297

Date 1770

Materials ceramics, fine hard-paste porcelain from China

Measurements 3,1 x 16,086 cm

© Collection Pointe-à-Callière, Paul-Gaston L'Anglais fonds, 2018.010.1297

Photo by René Bouchard