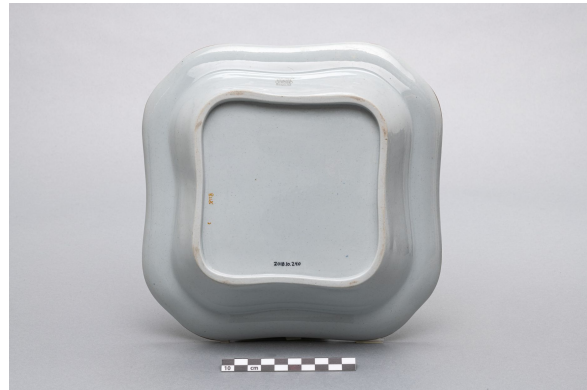


Salad bowl

<https://collections.pacmusee.qc.ca/en/objects/salad-bowl-2018-010-0240/>

/ Domestic life / salad bowl



CC BY-NC-ND 4.0 license

The dish is complete. It is square with beveled corners and a wavy outline. The edge is raised, and the wing is narrow and sloping, with a rounded bulge at its junction with the wall. The wing is inclined and curved towards the bottom, which is flat. The dish rests on a foot in line with the wall; the bottom is recessed and flat. The base is wide and free of glaze. There is a

mark printed in black on the outer wall. The mark is a rectangle with a double line; it is trimmed with wavy symbols and features a rectangular cartouche in the center, with beveled corners and marked: SPODE. Below the rectangle are the words: Stone China. Under the background, the numbers 2118 and C are painted in orange. There are linear markings on the inner background; the decoration is applied by transfer printing and painted over glaze, in polychrome pink, green, black, orange, yellow and blue. The motif is an animal. The decoration is applied on the rim, on the edge of the wing, on the wing and on the bottom of the face. The rim is covered with a brown coating, which has partially disappeared. The edge of the wing is decorated with a narrow braid in black. It is decorated with two different motifs, repeated in alternation. The main motif is a row of elongated links alternating with a lozenge, painted in yellow-orange. This motif is interrupted in the corners by a row of four blue-painted plant motifs, framed by two curved bands of different widths, painted in red and yellow-orange. The wing is decorated with two similar floral motifs, repeated in alternation. One features two aligned leafy and flowery stems, painted in green, pink and blue, with a ribbon painted orange-yellow at one end. The other floral motif has no ribbon. The central motif is encircled by a fillet surmounted by spearheads pointing upwards; traced in black, these elements are painted orange-yellow. The main scene features two birds and flowers. The birds, multicolored male and female peacocks, are to the left of the motif, standing in profile to the right on stylized rocks painted black. The rocks rest on an uneven terrace, painted pale green. A leafy, flowering stem rises behind the rocks. Opposite the birds are rocks, behind which rise leafy, flowering stems, including at least one pink peony.

_____ 2018.10.240

_____ Spode

_____ 1820 c

_____ ceramics, Mason-type fine vitrified clay

_____ 5,3 x 23,2 cm

© Collection Pointe-à-Callière, Paul-Gaston L'Anglais fonds, 2018.010.0240

Photo by René Bouchard