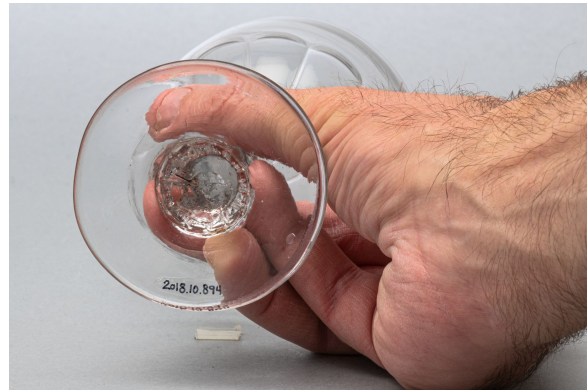


Rummer glass

<https://collections.pacmusee.qc.ca/en/objects/rummer-glass-2018-010-0894/>

Collections / From the Conquest to the founding of Canada / Rummer glass



CC BY-NC-ND 4.0 license

The glass is complete. It comprises a bowl, a stem and a foot. The bowl has a straight upper half, with a straight rim, while the lower half is conical, extending towards the stem. The stem is full and straight, though slightly constricted. It rests on a half-bud. The foot is circular with a truncated cone profile at the top. The underside shows a trace of glass pontil ; The decoration is molded. It is geometric. The lower half of the bowl is adorned with straight flutes with domed tops. These turn into small grooves on the stem and then into small flutes on the knob resting on the foot.

Accession Number 2018.10.894

Date 1820 c

Materials British lead-colorless glass

Measurements 12,9 x 8,371 cm

© Collection Pointe-à-Callière, Paul-Gaston L'Anglais fonds, 2018.010.0894

Photo by René Bouchard

On display