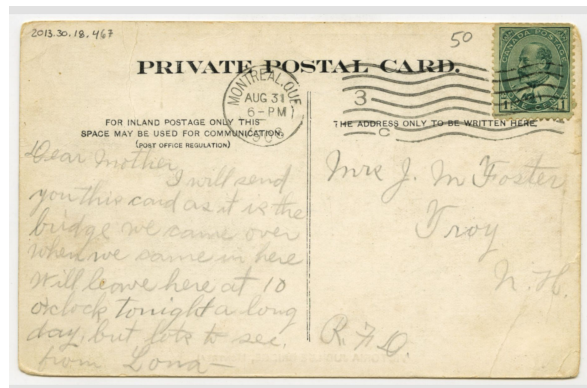


Postcards

Postcard

<https://collections.pacmusee.qc.ca/en/objects/postcard-2013-030-018-467/>

Collections / postcard



CC BY-NC-ND 4.0 license

Black & white postcard of the Victoria Bridge. Handwritten, stamped and stamped inscriptions.

Accession Number 2013.30.18.467

Date 1908 an

Medium and Support ink, cardboard

Technique industrial process

Measurements 8,9 x 14,1 cm

© Pointe-à-Callière Collection, Christian Paquin Collection ,2013.030.018.467