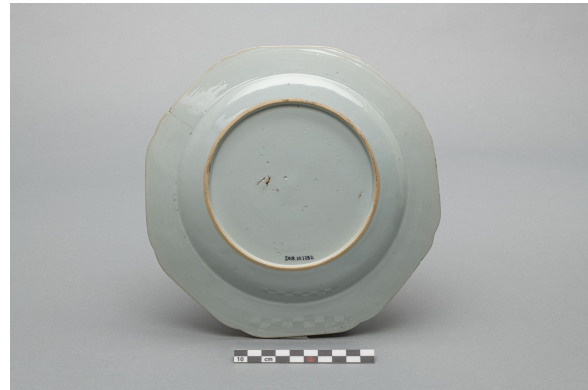


Plate

<https://collections.pacmusee.qc.ca/en/objects/plate-2018-010-1282/>

Collections / From the Conquest to the founding of Canada / plate



CC BY-NC-ND 4.0 license

The plate is complete; there is some missing around the rim and some flaws on the reverse. The plate is circular in shape, with an octagonal rim and concave corners. The rim slopes slightly inwards, the side is socked and the bottom is flat and recessed. The plate rests on a small milled foot that is free of glaze. There are traces of wear on the inner base; the decoration is traced

and hand-painted in underglaze blue. The decoration covers the rim, wall and bottom of the plate. It is of the lake landscape type. The border frieze is complex and composed of various elements. Near the rim, there is a narrow braid adorned with a row of small core ovals. The frieze is composed of two groups of elements repeated alternately on the sides of the plate's marli. One group is composed of three rows of stone beads on which are plant motifs, bordered by two plant motifs painted dark blue. The other group consists of two rows of staggered core beads, bordered at each end by a flower. These two groups of elements support leafy, flowering stems that form a garland. The decoration on the wall is a row of pairs of spirals encircling a trident and resting on a fillet. The background depicts an oriental scene with water and islands. On the main island, painted in faded blue, is a fence with vertical posts and latticework panels; it borders two tall, leafy plants, each adorned with a large flower, one of which appears to be a peony. On the neighbouring island, bordered by large boulders, stands a huge pine tree and a pavilion with an oriental-style stepped roof. The perimeter of the plate is covered with iron-brown plaster.

Accession Number 2018.10.1282

Date 1790

Materials ceramics, fine hard-paste porcelain from China

Measurements 2,5 x 22 x 22 cm

© Collection Pointe-à-Callière, Paul-Gaston L'Anglais fonds, 2018.010.1282

Photo by René Bouchard

On display