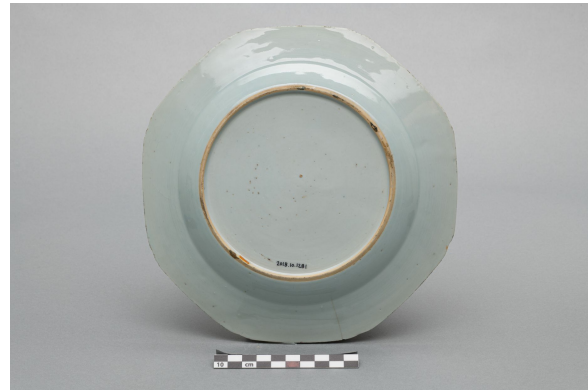


Plate

<https://collections.pacmusee.qc.ca/en/objects/plate-2018-010-1281/>

Collections / From the Conquest to the founding of Canada / plate



CC BY-NC-ND 4.0 license

The plate is complete; there is some missing around the rim and some flaws on the reverse. The plate is circular in shape, with an octagonal rim and concave corners. The rim slopes slightly inwards, the side is socked and the bottom is flat and recessed. The plate rests on a small milled foot that is free of glaze. There are traces of wear on the inner base; the decoration is traced

and hand-painted in underglaze blue. The decoration covers the rim, wall and bottom of the plate. It is of the lake landscape type. The border frieze is complex, consisting of two groups of elements repeated alternately on the sides of the plate's border; the difference lies in the elements resting on the braid. The groups consist of a braid adorned with three rows of core beads, with a half-flower in the center near the edge. The braid is bordered by a plant element painted dark blue. The braid is supported by groups of plants, sometimes combined with a row of core beads. These two groups of elements support leafy stems that form a garland. The decoration on the wall is a row of pairs of spirals encircling a trident and resting on a double fillet. The background depicts an oriental scene with water and islands. The main island, painted in faded blue, is bordered by a fence with vertical posts and panels adorned with a swastika; it supports several tall pagodas with stepped roofs in the oriental style; the lower part of two of them is traced in dark blue and shelters a figure, while another figure stands near the fence. The buildings are bordered by tall, leafy trees and pines. This island is linked to another to the left by a single-arch masonry bridge, over which a figure walks. This island, painted a faded blue and lined with large rocks, is home to two oriental-style pavilions with stepped roofs. Two sailboats ply the water. In the background, pointed mountains and birds flutter by.

Accession Number 2018.10.1281

Date 1790

Materials ceramics, fine hard-paste porcelain from China

Measurements 2,7 x 22,9 x 23 cm

© Collection Pointe-à-Callière, Paul-Gaston L'Anglais fonds, 2018.010.1281

Photo by René Bouchard

On display