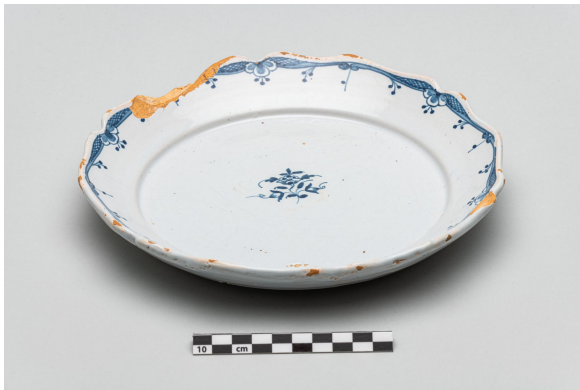


Plate

<https://collections.pacmusee.qc.ca/en/objects/plate-2018-010-0964/>

Collections / From the Conquest to the founding of Canada / plate



CC BY-NC-ND 4.0 license

The plate is incomplete; the rim is missing. The plate is circular, with an undulating rim. In cross-section, the rim is in line with the marli, which is inclined towards the bottom and slightly concave, the wall is very low and curved towards the bottom, which is flat. The reverse of the plate is almost truncated cone-shaped, although the wall is slightly convex; the bottom is

flat. The turning rings are visible. The base of the plate is angular. The body is pinkish-beige in color and covered with a bluish-white glaze. On the reverse, the enamel is missing and dotted with small holes. Three traces of linear and triangular pernettes are visible under the marli. The base of the plate shows signs of wear. The inner base of the plate shows small linear marks and signs of wear; the decoration is molded and hand-painted; it has been traced and painted in blue underglaze. The molded decoration is visible around the rim of the plate. The painted decoration is of the floral braid and flower type. The painted decoration is applied to the wall below the inner rim and to the inner base. The decoration under the rim is a narrow braid, composed of the same repeated element. It consists of a central three-lobed leaf, flanked by two sections of crosshatched braid ending in a scroll. Three straight pearl stems hang from the leaf, while those hanging from the braid are curved and a single pearl stem hangs from the scrolls. The background features a small flower surrounded by leafy stems.

Accession Number 2018.10.964

Date 1770 c

Materials ceramic, white earthenware

Measurements 3,6 x 22,7134 cm

© Collection Pointe-à-Callière, Paul-Gaston L'Anglais fonds, 2018.010.0964

Photo by René Bouchard