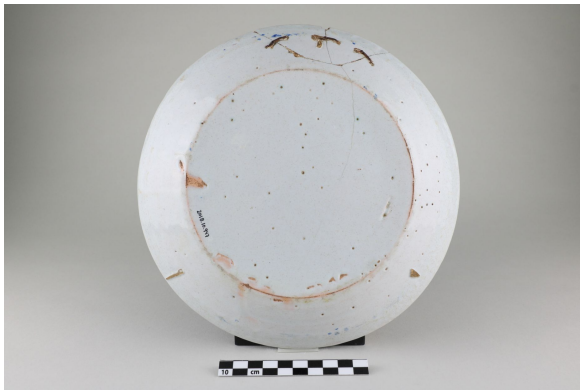


# Plate

<https://collections.pacmusee.qc.ca/en/objects/plate-2018-010-0947/>

Collections / plate



CC BY-NC-ND 4.0 license

The plate is complete; some breaks have been repaired with wire. It is circular in shape, with a plain rim. In cross-section, the rim is in line with the marli, which is high and sloping towards the bottom, while the wall is low and curved towards the bottom, which is flat. On the reverse, the plate has a truncated cone-shaped cross-section with a slightly concave base; the

circumference of the base is angular. Turning rings are visible on the reverse. The body is pinkish-beige in color and covered with a bluish-white glaze; the glaze is missing under the bottom, and there is a burr near the rim. Three traces of linear and triangular pernettes are visible under the marli. The plate is broken, repaired with three rusty iron wires, inserted in as many pairs of small circular holes drilled in the plate and held in place by a hard white paste. On the reverse, the wire ends are twisted and cut; the decoration is hand-painted in polychrome. It has been traced and painted in blue underglaze, and in red with green highlights overglaze. It is of the compartmented braid and floral basket type. The decoration is painted on the marli, near the rim, and in the center of the background. The border is decorated with a ring-shaped braid. It is outlined and painted in blue and red. The braid is decorated with two repeated motifs. The main motif, in reserve and mirrored, consists of two scrolls flanked by two wing-shaped quarter-flowers. These flowers are adorned with red radiating lines. The other motif is a latticework drawn in red and trimmed with blue-painted pearls. These two motifs are separated by a half-flower traced in red with a blue-painted core, which is set in two vertical arched bands traced in blue. The background features two motifs: a flowery basket surrounded by a ring motif. The basket is truncated cone-shaped, with a flat swollen base; the horizontal rim is swollen, as is the junction between the wall and the base. It is outlined in blue and decorated with red lines; the rendering of the basket imitates rattan. From the top of the basket emerges a central flower flanked by two leaves in a row, surrounded by leafy plant stems. All the trimmings are outlined in blue, and some leaves are partially filled in with red radiating lines. Red tendrils hang from the basket. The ring around the basket is a chain made of three distinct, alternately repeated elements. One consists of two concentric lozenges traced in blue; its tips are trimmed with blue-painted pearls and surrounded by a green halo. Another is a blue-painted oval with a pale-blue core. The last element is a blue-painted oval

with a blue core adorned with red radiating lines; the oval is decorated with cross-shaped blue-painted pearls surrounded by a green halo.

---

Accession Number 2018.10.947

Date 1740 c

Materials ceramic, white earthenware

Measurements 3,4 x 24,0152 cm

---

© Collection Pointe-à-Callière, Paul-Gaston L'Anglais fonds, 2018.010.0947

Photo by Francois Gignac