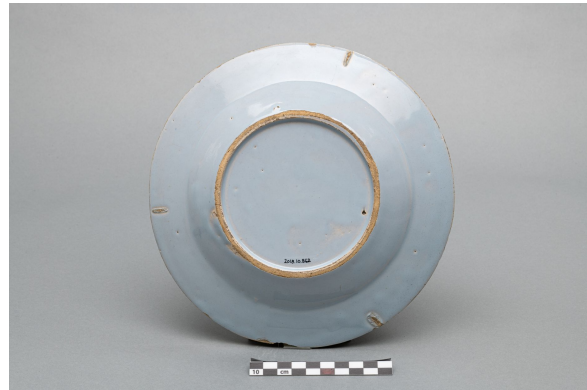


Plate

<https://collections.pacmusee.qc.ca/en/objects/plate-2018-010-0862/>

Collections / plate



CC BY-NC-ND 4.0 license

The plate is complete. It is circular in shape with a plain rim. On the front, the rim slopes slightly inwards, and the wall slopes towards the bottom, which is flat. On the reverse, the plate rests on a milled foot, with a wide, unglazed base; the bottom is recessed and flat. The body is beige, and the object is covered with a bluish-white enamel. There are three traces of a

pernette in a triangular pattern on the reverse. The enamel is shiny. The enamel around the rim has disappeared ; The decoration is hand-painted in cobalt blue, underglaze. It is of the Chinese lake scene type. The decoration can be found on the rim, on the wall and on the base. The decoration on the marli consists of a narrow braid trimmed with rectangular sections and a central pearl; it is underlined by a fillet. The decoration on the wall is a cross braid with a large central cross and vertical dashes. The background decoration features a lake scene composed of a grassy terrace with a tall central tree, a pavilion with fireplace, rocks and trees.

Accession Number 2018.10.862

Date 1775 c

Materials ceramic, white earthenware

Measurements 3 x 22,5117 cm

© Collection Pointe-à-Callière, Paul-Gaston L'Anglais fonds,2018.010.0862

Photo by René Bouchard

On display