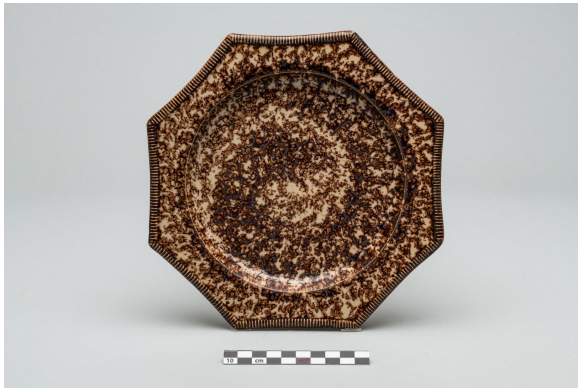


Plate reproduction

<https://collections.pacmusee.qc.ca/en/objects/plate-2018-010-0524/>

Collections / Post-war to present day / plate



CC BY-NC-ND 4.0 license

The plate is complete. It is octagonal in shape, with a slightly concave contour. The rim is rounded and flat, while the wall curves towards the flat bottom. On the reverse, the plate rests on a milled foot, and the bottom is recessed and flat. There is a medallion in relief in the center of the base, with a mark made by debossing under the base: MM A.; The decoration is

molded and made with iron oxide mixed with the glaze. The molded motif is visible on the edge of the marli face: it consists of a bead trimmed with short, narrow grooves. The iron oxide decoration is visible on both the front and reverse of the plate, in the form of clouds, less dense on the reverse.

Accession Number 2018.10.524

Date 1990 c

Materials ceramics, fine earthenware Creamware

Measurements 0,8 x 21,2 x 21,2 cm

© Collection Pointe-à-Callière, Paul-Gaston L'Anglais fonds, 2018.010.0524

Photo by René Bouchard