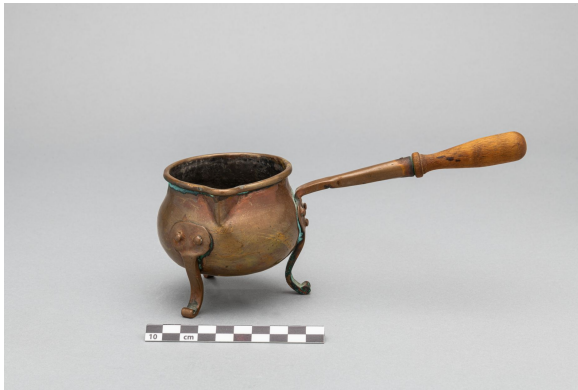


Milk jug

<https://collections.pacmusee.qc.ca/en/objects/milk-jug-2018-010-0348/>

Collections / milk jug



CC BY-NC-ND 4.0 license

The milk jug is complete. It is circular in shape, with a domed wall, a rounded shoulder and a short, slightly constricted neck. The rim is swollen and folded in on itself on the outside, with a flat top. The spout is triangular with a flat top. In its lower portion, the wall curves towards the bottom, which is domed. The object rests on three feet arranged in a triangle. The

legs are made of a long, flat, curved stem, the lower end of which is folded in on itself; the stem is fitted with a flattened, oval-shaped head. Each head has three holes arranged in a triangle, through each of which a stem with a head riveted to the wall passes. The container has a bipartite, sloping side handle. It consists of a tapered sleeve, linked at one end to the head of one of the feet. A wooden stick is inserted into the other end: circular in cross-section, it has a domed tip, a tapered section of equal thickness and a flat knob before being inserted into the socket. The outer surface is copper-brown in color; there's a copper-yellow vertical weld from the edge to under the bottom, where it joins another circular weld. Around the edge of the plates holding the handle and feet, there is a burr of white metal, which could be lead or tin. The inner surface appears to be covered with a thin layer of a white metal, like pewter ; None, apart from the shape of the container with its riveted feet.

Accession Number 2018.10.348

Date 1891 c

Materials metal, wood

Measurements 8,6 x 7,685 cm

© Collection Pointe-à-Callière, Paul-Gaston L'Anglais fonds,2018.010.0348

Photo by René Bouchard

On display