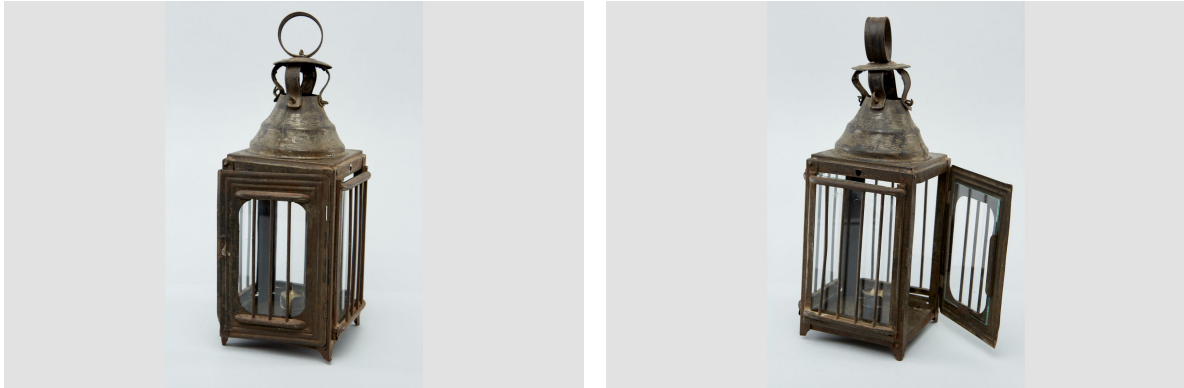


Lantern

<https://collections.pacmusee.qc.ca/en/objects/lantern-2021-059-098-1-5/>

Collections / lantern



CC BY-NC-ND 4.0 license

Handcrafted, square-shaped tin lantern with glass windows, protected on each side by vertical tin-rod screens. The base has a tinplate receptacle in the center for holding a candle. Inverted cone-shaped mantel topped by a flat cap resting on 4 iron pillars. Tinplate handle and hinges. Handle missing.

Accession Number 2021.59.98.1-5

Date 1850 c

Materials glass, metal

Measurements 32 x 11,5 x 11,5 cm

© © Collection Pointe-à-Callière, don de Jacques Lacaille, 2021.059.098.1-5

Photo by Michel Pinault