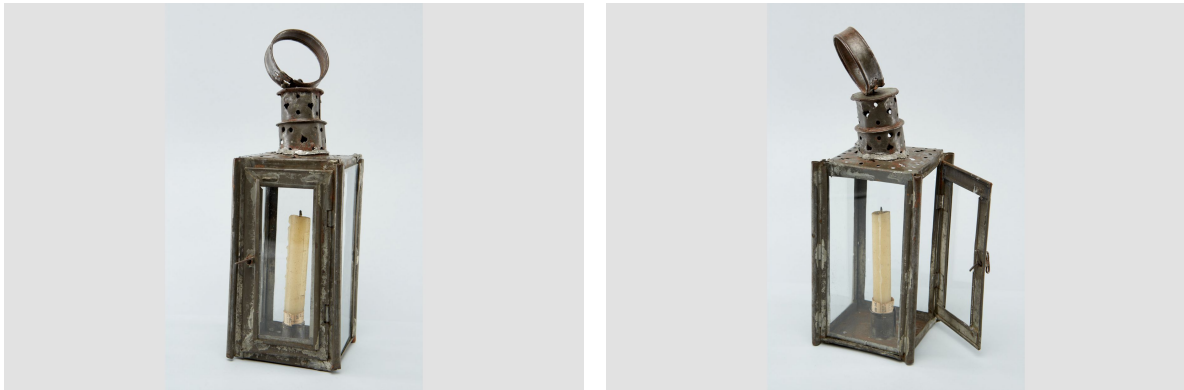


Lantern

<https://collections.pacmusee.qc.ca/en/objects/lantern-2021-059-097-1-3/>

Collections / lantern



CC BY-NC-ND 4.0 license

Tin lantern in cubic form. The chimney is pierced with various round and heart-shaped motifs. The lantern has four glass panels, one of which can be opened. Candle and round handle.

Accession Number 2021.59.97.1-3

Date 1850 c

Materials glass, metal, iron, metal, tin

Measurements 33 x 11 x 11 cm

© © Collection Pointe-à-Callière, don de Jacques Lacaille, 2021.059.097.1-3

Photo by Michel Pinault