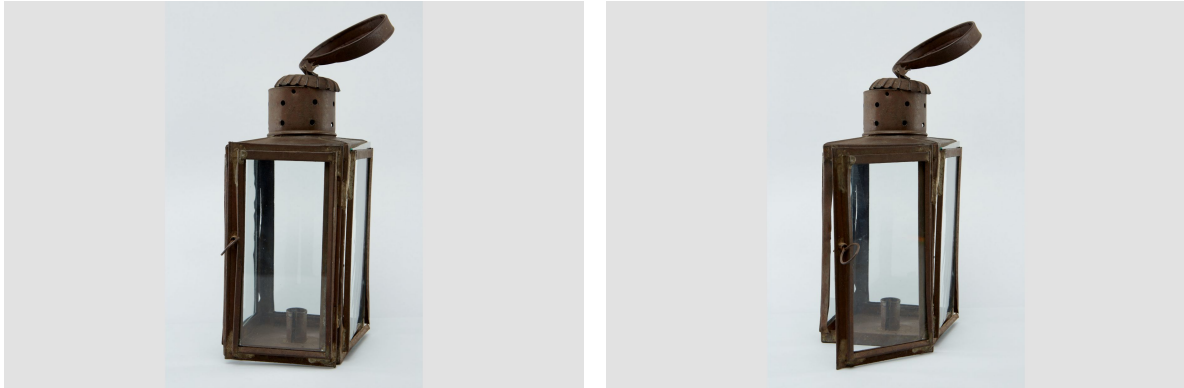


# Lantern

<https://collections.pacmusee.qc.ca/en/objects/lantern-2021-059-092-1-4/>

Collections / lantern



CC BY-NC-ND 4.0 license

Handcrafted square tin lantern with glass windows. The base has a tinplate receptacle in the center to hold a candle. Cylindrical mantel, handle, hinges and grip in tinplate.

---

Accession Number 2021.59.92.1-4

Period 19th century

Materials glass, metal, iron, metal, tin

Measurements 43 x 14,5 x 15,5 cm

---

© © Collection Pointe-à-Callière, don de Jacques Lacaille, 2021.059.092.1-4

Photo by Michel Pinault