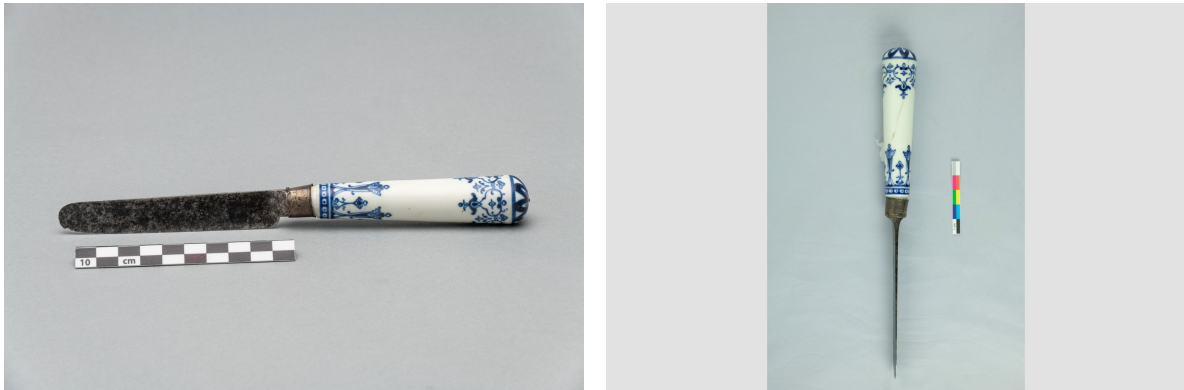


Knife

<https://collections.pacmusee.qc.ca/en/objects/knife-2018-010-1403/>

Collections / From the Conquest to the founding of Canada / knife



CC BY-NC-ND 4.0 license

The knife is complete, with a steel blade and rat-tail tang inserted in a white porcelain handle; the junction between the two elements is covered by a silver ferrule. The blade is straight and has a back parallel to the cutting edge; the butt is rounded and thin, and the cutting edge is very thin. The ferrule is conical with straight ends. The handle is cylindrical in cross-section, tapering towards the front end – close to the ferrule – while the opposite end is domed. At the center of the rounded end of the handle is a small hole through which the steel tang is riveted. The handle is cracked in one place; the decoration is painted blue on the handle. The decoration occupies three zones: near the front and rear ends, as well as on the rear end. Near the front end, the decoration consists of a ribbon adorned with a row of rectangles in reserve with a central pearl. From this ribbon hang two alternating motifs of different lengths, similar to crossed cords and

adorned with a shell and tassel at the end. Near the rear end, the decoration consists of a row of four-lobed elements with beads, enclosing a three-lobed element from which hangs a tassel with full wings. Three-lobed elements fill the space between the main elements. The end decoration consists of large, radiating petals resting on a ring. The decoration is finely traced. There is also a slight incised decoration on the silver ferrule, near the ends.

Accession Number 2018.10.1403

Date 1760 c

Materials ceramics, fine porcelain from France, metal, silver, metal, steel

Measurements 22,2 cm

© Collection Pointe-à-Callière, Paul-Gaston L'Anglais fonds,2018.010.1403

Photo by René Bouchard