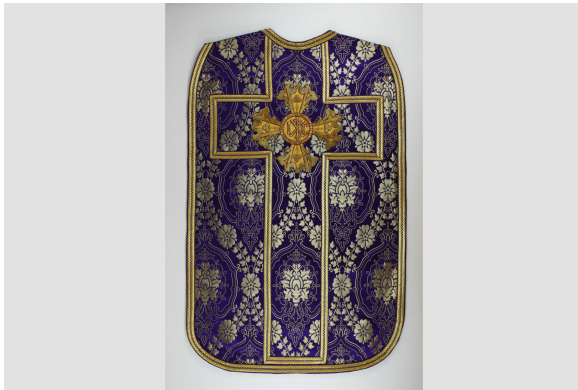


Fabric sample

<https://collections.pacmusee.qc.ca/en/objects/fabric-sample-2013-011-010/>

Collections / Religious heritage / fabric sample



CC BY-NC-ND 4.0 license

Sample of commercial chasuble from the E.A. Séguin company on Sainte-Cathrine Street in Montreal.

Accession Number 2013.11.10

Period 1st quarter of the 20th century

Materials fiber

Technique artisanal

Measurements 70 x 46 cm

© Collection Pointe-à-Callière,2013.011.010