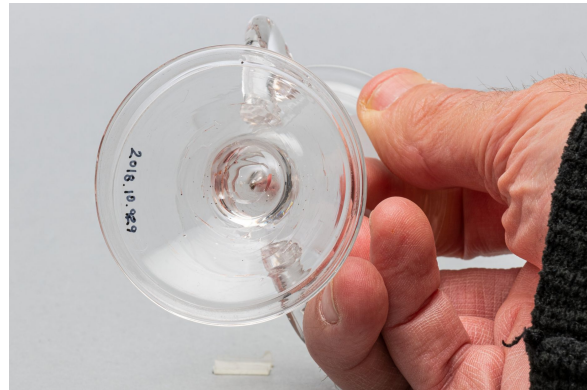


Dessert cup

<https://collections.pacmusee.qc.ca/en/objects/dessert-cup-2018-010-0929/>

Collections / From the Conquest to the founding of Canada / dessert cup



CC BY-NC-ND 4.0 license

The cut is complete. It is circular in shape. Its wall is high, flaring towards the rim, which is flat. At its base, the bowl curves towards the stem, which is shaped like a full, flattened sphere. The foot is circular in shape, with a high, truncated cone at the top; the rim is folded in on itself. The inner top of the foot shows a trace of glass pontil. The bowl has two vertical, ear-shaped handles, solid and circular in cross-section. Their ends rest on the wall; those at the top are thicker, while those at the base have a triangular tail that rises to the top ; None, apart from the shape of the object and the transparency of the glass. The stem is adorned with a small, elongated air bubble.

Accession Number 2018.10.929

Date 1800 c

Materials lead-free colorless glass

Measurements 8,1 x 5,761 cm

© Collection Pointe-à-Callière, Paul-Gaston L'Anglais fonds, 2018.010.0929

Photo by René Bouchard