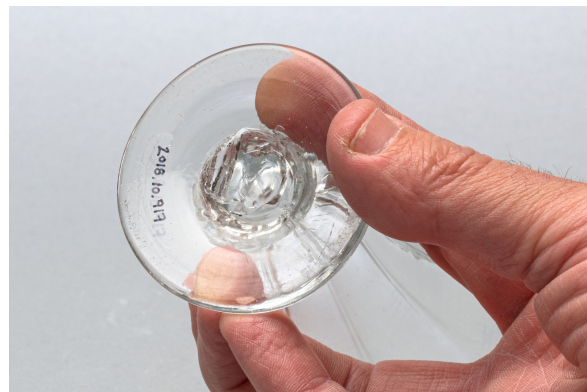


Dessert cup

<https://collections.pacmusee.qc.ca/en/objects/dessert-cup-2018-010-0917/>

Collections / From the Conquest to the founding of Canada / dessert cup



CC BY-NC-ND 4.0 license

The cut is complete. It is cylindrical in shape. Its wall is high, slightly flared towards the rim, which is also flared. At its base, the bowl curves towards the stem, which has the shape of a flattened sphere. The foot is thick, with a deformed circular shape and a truncated cone profile at the top. The underside has a slight off-center circular indentation and a trace of glass pumice. There are traces of wear under the foot; the decoration is molded. It is geometric. The outer wall of the bowl is decorated with straight flutes with rounded edges, which stop below the rim. They continue on the knob, which rests on the foot.

Accession Number 2018.10.917

Date 1820 c

Materials British lead-colorless glass

Measurements 10,4 x 7,159 cm

© © Collection Pointe-à-Callière, fonds Paul-Gaston L'Anglais, 2018.010.0917

Photo by René Bouchard

On display