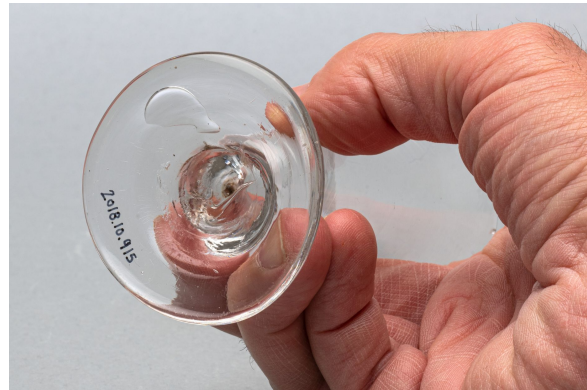


Dessert cup

<https://collections.pacmusee.qc.ca/en/objects/dessert-cup-2018-010-0915/>

Collections / From the Conquest to the founding of Canada / dessert cup



CC BY-NC-ND 4.0 license

The cut is complete. It is cylindrical in shape. Its wall is high, slightly flared towards the rim, which is also flared. At its base, the bowl curves towards the stem, which has the shape of a flattened sphere. The foot is thick, with a deformed circular shape and a truncated cone profile at the top. The underside has a slight off-center circular indentation and a trace of glass pontil; None, apart from the button-shaped stem, the shape of the object and the transparency of the glass.

Accession Number 2018.10.915

Date 1820 c

Materials British lead-colorless glass

Measurements 11,2 x 5,559 cm

© Collection Pointe-à-Callière, Paul-Gaston L'Anglais fonds, 2018.010.0915

Photo by René Bouchard