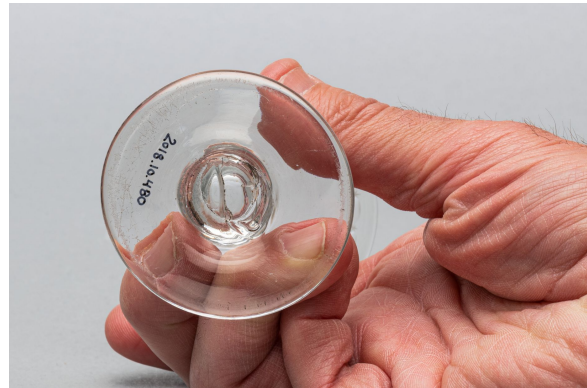


Dessert cup

<https://collections.pacmusee.qc.ca/en/objects/dessert-cup-2018-010-0480/>

Collections / From the Conquest to the founding of Canada / dessert cup



CC BY-NC-ND 4.0 license

The cut is complete. It is cylindrical in shape. The wall is high and straight, but slightly convex towards the base, with a flared rim. At its base, the bowl tapers towards the stem. The base is thick. The stem is almost absent and cylindrical, ending in a flattened bud. The foot is circular in shape, with a truncated cone profile at the top; it is thick. The underside shows a trace of glass pontil. The base has numerous linear marks ; The decoration is cut and blown. It is geometric on the bowl and stem. The outer rim of the bowl is decorated with a row of alternating ovals and six-pointed stars. The stem features a flattened button.

Accession Number 2018.10.480

Date 1820 c

Materials British lead-colorless glass

Measurements 11,2 x 6,96 cm

© Collection Pointe-à-Callière, Paul-Gaston L'Anglais fonds, 2018.010.0480

Photo by René Bouchard