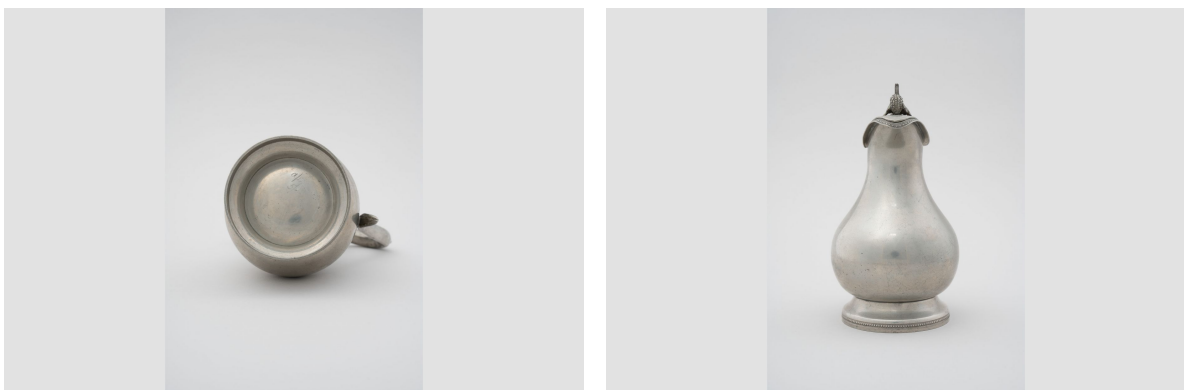
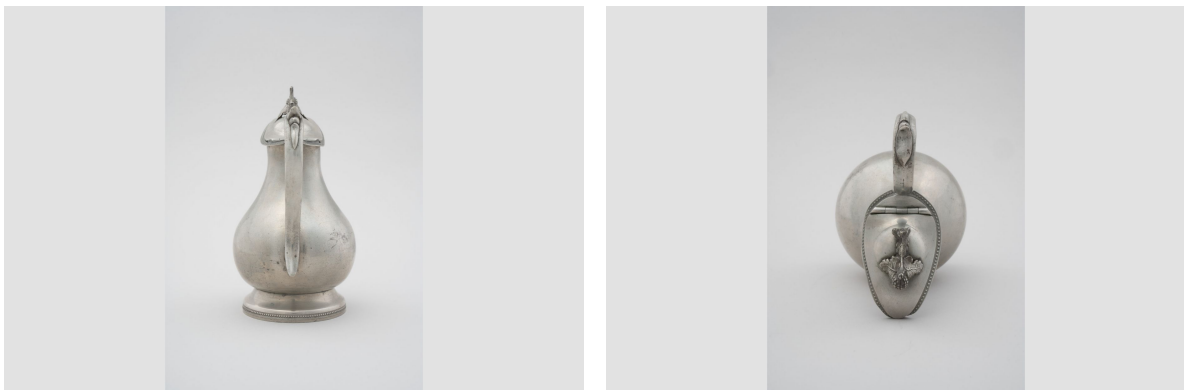
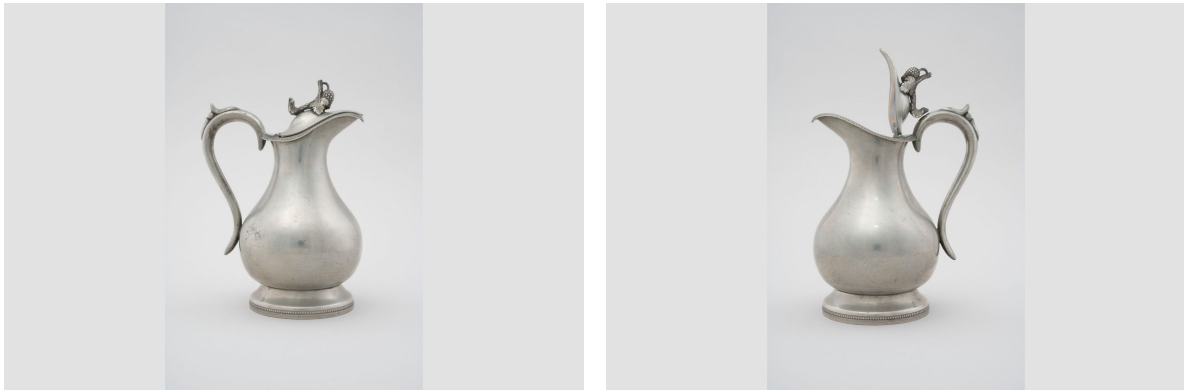


Creamer

<https://collections.pacmusee.qc.ca/en/objects/creamer-2021-059-175-002/>

Collections / creamer



Louis XV ewers, with transparent molded glass body? set with a pewter neck and highly ornamented clamshell lid. Red-brown deposits are visible inside the neck.

Accession Number 2021.59.175.02

Materials metal, tin

Measurements 29 cm

© © Collection Pointe-à-Callière, don de Jacques Lacaille, 2021.059.175.002

Photo by Victor Diaz Lamich