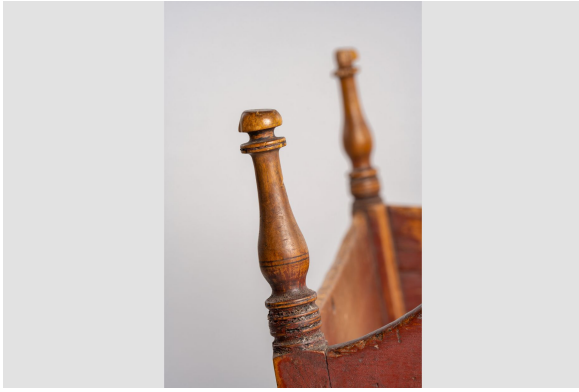


Cradle

<https://collections.pacmusee.qc.ca/en/objects/cradle-2021-059-190/>

Collections / cradle





CC BY-NC-ND 4.0 license

Cradle with wide, massive runners, covered in dark red paint. Cattails in good condition. Mortise-and-tenon and pegged assembly.

Accession Number 2021.59.190

Period 4th quarter of the 18th century

Materials wood, cherry, wood, pine

Measurements 64 x 80 x 98 cm

© © Collection Pointe-à-Callière, don de Jacques Lacaille, 2021.059.190

Photo by Victor Diaz Lamich