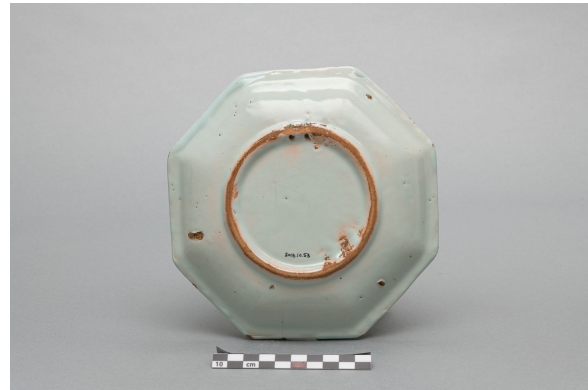


Compotier

<https://collections.pacmusee.qc.ca/en/objects/compotier-2018-010-0053/>

Collections / compotier



CC BY-NC-ND 4.0 license

The compotier is complete; there is some enamel loss around the rim, particularly at the corners. The compotier is octagonal in shape with a plain rim. In cross-section, the wing is slightly inclined, and the wall is more steeply inclined towards the bottom, before curving towards the flat bottom. The bottom rests on an annular foot with a truncated cone-shaped

cross-section. The body is pinkish-beige in color and covered with a bluish-white glaze; the foot is unglazed. There are smudges of enamel under the compotier, near the rim, as well as chips under the base and a few small holes in the enamel on the reverse. Three traces of linear and triangular pernettes are visible under the wall. The foot is pierced by two aligned circular holes, the inside of which is covered with enamel ; The decoration is hand-painted in two-tone. It was traced in black and painted blue underglaze, and red overglaze. It is of the compartmented braid and floral basket type. The decoration is painted on the wing and in the center of the base. The wing is decorated with a braid. It is outlined in black and painted in blue and red. The braid is decorated with two repeated motifs. The main motif, in reserve on a blue background, consists of two scrolls flanked by two wing-shaped quarter-flowers. These flowers are adorned with red radiating lines. The other motif is a latticework drawn in red and trimmed with blue-painted pearls. These two motifs are separated by a half-flower traced in red with a blue-painted core, which is set in two blue-painted vertical bands, while the sides are in reserve. The background features a flowery basket. The basket is truncated cone-shaped, with a flat, bulging rim and base. It is outlined in blue and partially filled with horizontal dashes painted red; the basket's rendering imitates rattan. From the top of the basket emerge a central half-flower flanked by two aligned leaves; these are surrounded by leafy vegetal stems and grapes, and all these trimmings are outlined in black. The flower and two leaves are partially filled with red radiating lines. The other leaves are painted blue, while the grapes are partially painted blue. Red tendrils hang from the basket. The basket rests on a truncated cone-shaped base, outlined in black and painted blue; the interior is lined with a red latticework with blue beads.

Date 1740 c

Materials ceramic, white earthenware

Measurements 2,9 x 18,2 x 18,2 cm

© Collection Pointe-à-Callière, Paul-Gaston L'Anglais fonds, 2018.010.0053

Photo by René Bouchard

On display