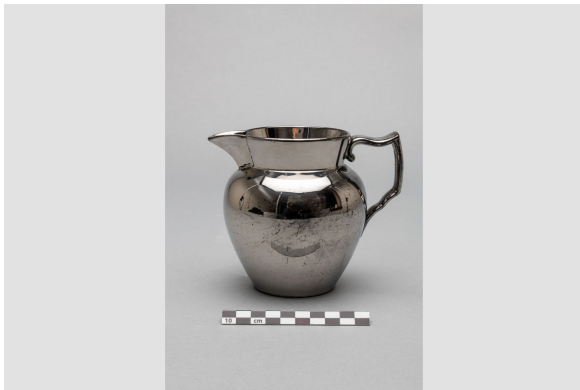
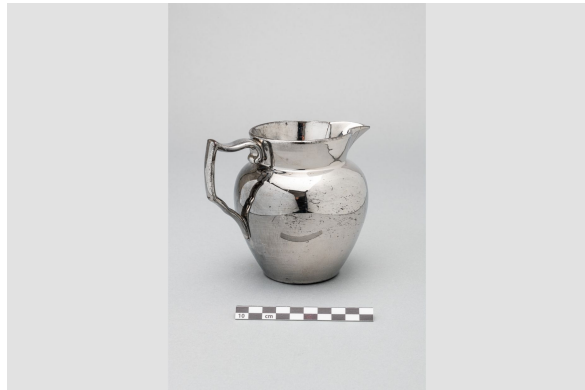


Bowl

<https://collections.pacmusee.qc.ca/en/objects/bowl-2018-010-1339/>

Collections / Domestic life / bowl



CC BY-NC-ND 4.0 license

The container is complete; the rim is missing and some breaks and cracks have been repaired with metal studs. It is circular in shape with an undulating rim. In cross-section, the container features a flared wall with a wide, corrugated top, and a flat bottom resting on an annular foot. The reverse side of the container features ten pairs of drilled holes, each

accommodating nine copper metal studs. The pair of holes without studs has been plugged with white material. Two pairs of holes on the wall feature an additional hole ; The decoration is molded and hand-painted on glaze in polychrome pink, blue, green, turquoise, orange, yellow and black, in the Famille rose style, with touches of gilding. The molded decoration is visible below the inner rim and consists of a slight vertical bulge of triangular shape; all are equidistant. The painted decoration is floral. It is visible below the rim, on the inner wall and on the inner base. Under the rim, the decoration is traced in red and painted in gold; it consists of two double fillets, the lower one bordering a row of three-lobed scrolled motifs. The decoration on the wall consists of a series of three different rosettes, repeated in groups. These rosettes are outlined in pink and painted in faded pink, and are surrounded by small leaves outlined in black and painted in green or turquoise. A frieze identical to the one on the rim surrounds these rosettes at the junction of the wall and the background. The background is decorated with a group of leafy, flowering stems. Stems and leaves are outlined in black, while the leaves are painted green or turquoise. Four large flowers are outlined in pink and painted in faded pink, another is painted in blue and others are painted in orange and gold. The top of the bowl is covered with an iron-brown coating.

Accession Number 2018.10.1339

Date 1790

Materials ceramics, fine hard-paste porcelain from China

Measurements 4 x 23,6152 cm

© Collection Pointe-à-Callière, Paul-Gaston L'Anglais fonds, 2018.010.1339

Photo by René Bouchard