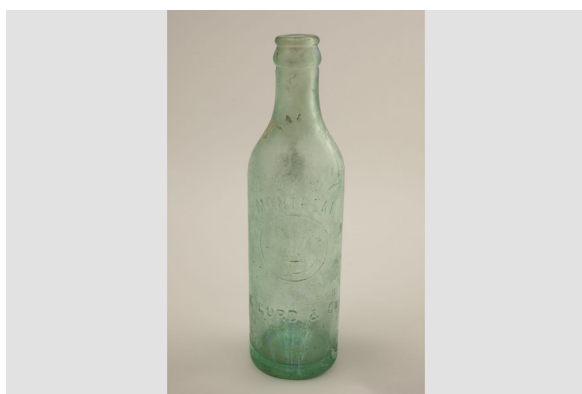


Ethnohistorical collection

Bottle soft drink

<https://collections.pacmusee.qc.ca/en/objects/bottle-2010-031/>

Collections / bottle



CC BY-NC-ND 4.0 license

Pale green glass bottle with embossed lettering and company logo.

Accession Number 2010.31

Fabricant / Éditeur Charles Gurd & Co. Limited

Period 19th century

Materials glass

Technique molded

Measurements 22 x 6 cm

© © Collection Pointe-à-Callière, 2010.031

On display