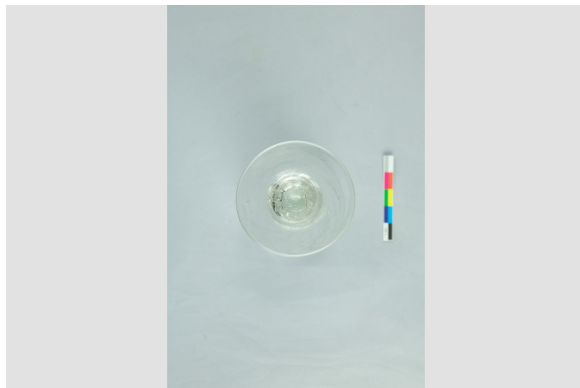


Alcoholic beverage glass

<https://collections.pacmusee.qc.ca/en/objects/alcoholic-beverage-glass-2018-010-1374/>

Collections / From the Conquest to the founding of Canada / alcoholic beverage glass



CC BY-NC-ND 4.0 license

The glass is complete. It includes a bowl, a stem and a foot. The bowl is conical: its base is tiny, its walls flare upwards, and the rim is straight and in line with the base. The stem is solid and made of two parts: a swollen knob with flattened ends, and a cylinder. The foot is circular and conical in

profile, with a flattened knob at the top. The underside shows a trace of glass pontil; the decoration is molded on the wall and on the knob of the foot. The wall is fluted on the outside; the flutes are almost straight on the lower part of the wall, before curving towards the top. The inner surface of the bowl is domed. The knob resting on the foot is ornamented with vertical wavy grooves.

Accession Number 2018.10.1374

Date 1800

Materials British lead-colorless glass

Measurements 12,2 x 5,6 cm

© Collection Pointe-à-Callière, Paul-Gaston L'Anglais fonds, 2018.010.1374

Photo by René Bouchard