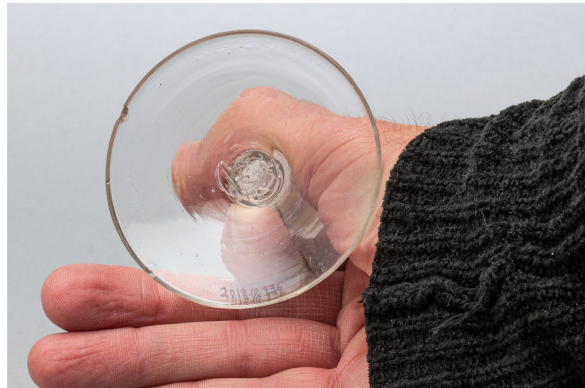


Alcoholic beverage glass

<https://collections.pacmusee.qc.ca/en/objects/alcoholic-beverage-glass-2018-010-0936/>

Collections / From the Conquest to the founding of Canada / alcoholic beverage glass



CC BY-NC-ND 4.0 license

The glass is complete; there are small chips on the foot. It is in three parts: the cup, the stem and the foot. The cup is conical, with a wall that flares out towards the top, and a rim in its extension at the plain top; the wall curves towards the bottom, which is thin. The stem is cylindrical and straight. The foot is circular. It has a conical profile and a flared periphery. The center of the underside of the foot shows a trace left by the glass pontil, a tool used by the glassmaker to make glass ; The stem is adorned with a central rod made of thin twisted threads in opaque white glass and two thin rods in opaque glass drawn and twisted around the periphery (Opaque twist).

Accession Number 2018.10.936

Date 1770 c

Materials British lead-colorless glass

Measurements 14,9 x 5,275 cm

© Collection Pointe-à-Callière, Paul-Gaston L'Anglais fonds, 2018.010.0936

Photo by René Bouchard

On display