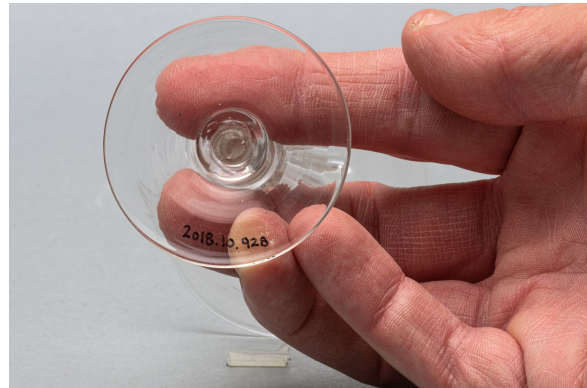


# Alcoholic beverage glass

<https://collections.pacmusee.qc.ca/en/objects/alcoholic-beverage-glass-2018-010-0928/>

Collections / From the Conquest to the founding of Canada / alcoholic beverage glass



CC BY-NC-ND 4.0 license

The glass is complete. It is in three parts: the bowl, the stem and the foot. The bowl is conical, with a tapering wall at the bottom and a straight rim with a plain top. The stem is solid, with an inverted baluster that widens at its junction with the foot. The foot is circular. It has a conical profile and a thin periphery. The foot's fulcrum is wide, its center is recessed and it shows a small trace left by the pontil, a tool used by the glassmaker to make the glass ; The decoration is molded. It is geometrically patterned. The outer face of the lower half of the wall is adorned with vertical fluting, which can also be seen on the inner wall.

---

Accession Number 2018.10.928

Date 1800 c

Materials lead-free colorless glass

Measurements 10,3 x 6,153 cm

---

© Collection Pointe-à-Callière, Paul-Gaston L'Anglais fonds, 2018.010.0928

Photo by René Bouchard

On display