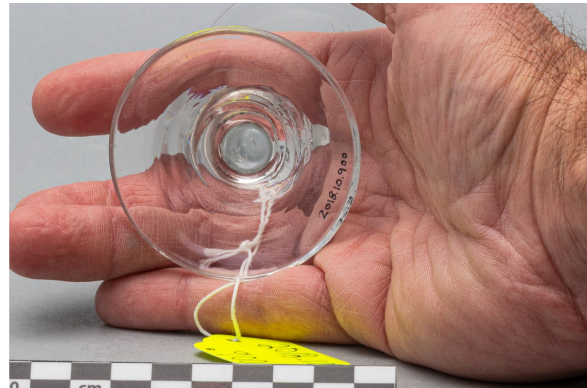


# Alcoholic beverage glass

<https://collections.pacmusee.qc.ca/en/objects/alcoholic-beverage-glass-2018-010-0900/>

Collections / From the Conquest to the founding of Canada / alcoholic beverage glass



CC BY-NC-ND 4.0 license

The glass is complete; there is a small lack on the rim. It is in three parts: the bowl, the stem and the foot, all made from a single piece. The bowl is truncated cone-shaped, with a tapered wall at the bottom and a flared rim with a plain top. The stem is solid, cylindrical and tapered at the bottom. The foot is circular. It has a conical profile and a rounded edge. The center of the underside of the foot shows a slight trace left by the pontil, a tool used by the glassmaker to make the glass. The inner wall of the bowl shows striations; none other than the shape of the object.

---

Accession Number 2018.10.900

Date 1800 c

Materials British lead-colorless glass

Measurements 14,6 x 6,565 cm

---

© Collection Pointe-à-Callière, Paul-Gaston L'Anglais fonds, 2018.010.0900

Photo by René Bouchard

On display