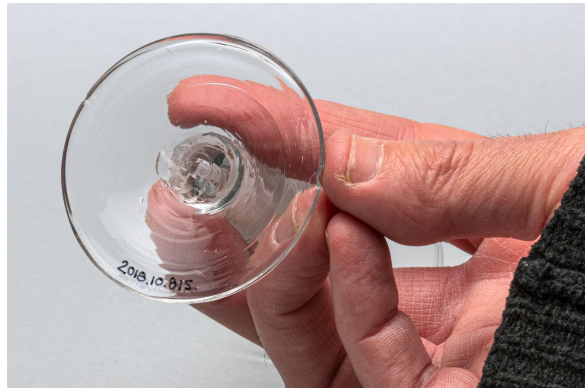


# Alcoholic beverage glass

<https://collections.pacmusee.qc.ca/en/objects/alcoholic-beverage-glass-2018-010-0815/>

Collections / From the Conquest to the founding of Canada / alcoholic beverage glass



CC BY-NC-ND 4.0 license

The glass is complete; a small fragment around the foot is missing. It is in three parts: the bowl, the stem and the foot. The bowl is truncated cone-shaped, with a tapered wall at the bottom and a straight rim with a plain top. The stem is solid, cylindrical and tapered at the bottom. The foot is circular. It has a conical profile and an oblique perimeter. The center of the underside of the foot shows a small trace left by the pontil, a tool used by the glassmaker to make the glass ; The decoration is inserted into the stem (Opaque twist). It consists of a vertical central stem in white opaque glass made of fine twisted wires, which is surrounded by four twisted wires.

---

Accession Number 2018.10.815

Date 1780 c

Materials colorless half-lead glass from Europe

Measurements 11,6 x 6,2 cm

---

© © Collection Pointe-à-Callière, fonds Paul-Gaston L'Anglais, 2018.010.0815

Photo by René Bouchard