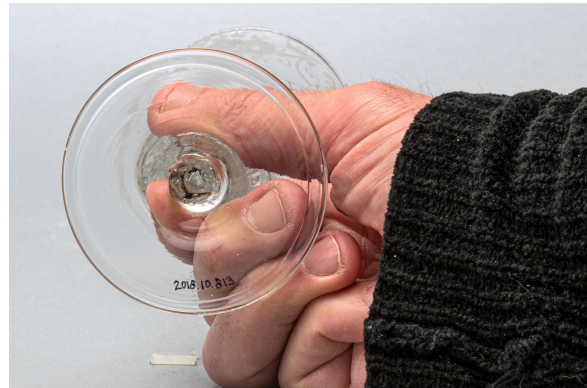


Alcoholic beverage glass

<https://collections.pacmusee.qc.ca/en/objects/alcoholic-beverage-glass-2018-010-0813/>

Collections / From the Conquest to the founding of Canada / alcoholic beverage glass



CC BY-NC-ND 4.0 license

The glass is incomplete; a small fragment of the bowl is missing, and has been repaired with glue. It is in three parts: the bowl, the stem and the foot. The bowl is conical, with an upwardly flaring wall and a plain rim. The bottom of the bowl is thick and rounded on the inside. The stem is hollow, shaped like an inverted baluster. The foot is circular. It has a conical profile and its rim is folded on the underside. The center of the underside of the foot shows a small trace left by the pontil, a tool used by the glassmaker to make the glass ; The decoration is molded on the stem and engraved on the bowl. The stem is hollow and molded into a baluster with seven concave sides. The thick bottom of the bowl is decorated with a spherical air ball. The upper, outer half of the bowl is adorned with carved decoration. It consists of two alternately repeated motifs: the first features two rows of

oval-shaped beads from which leafy stems emerge, and which are bordered by two spherical flowers made of radiating grooves, while the second shows a leafy stem emerging from beads, and garnished with two long, volute-curved stems. The decoration is surmounted, near the rim, by a plain fillet and a wavy furrow.

Accession Number 2018.10.813

Date 1800 c

Materials lead-free colorless glass from Europe

Measurements 15,3 x 6,574 cm

© Collection Pointe-à-Callière, Paul-Gaston L'Anglais fonds, 2018.010.0813

Photo by René Bouchard