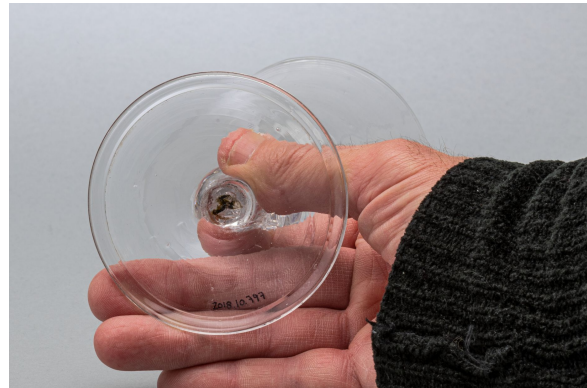


Alcoholic beverage glass

<https://collections.pacmusee.qc.ca/en/objects/alcoholic-beverage-glass-2018-010-0797/>

Collections / alcoholic beverage glass



CC BY-NC-ND 4.0 license

The glass is complete. It is in three parts: the bowl, the stem and the foot. The bowl is conical, with an upwardly flaring wall and a plain rim. The stem is hollow, shaped like an inverted baluster. The foot is circular. It has a conical profile and its rim is folded on the underside. The center of the underside of the foot shows a small trace left by the pontil, a tool used by the glassmaker to make the glass ; The decoration is molded on the stem and cut on the bowl. The lower outer third of the bowl is adorned with oval-shaped vertical sections. The space between them is flat; the upper half is decorated with short, superimposed horizontal grooves, while the lower half is cut as an elongated drop. The stems are hollow and molded in a baluster shape, with oval-shaped tops.

Accession Number 2018.10.797

Date 1770 c

Materials lead-free colorless glass from France

Measurements 17,5 x 8,888 cm

© Collection Pointe-à-Callière, Paul-Gaston L'Anglais fonds, 2018.010.0797

Photo by René Bouchard

On display