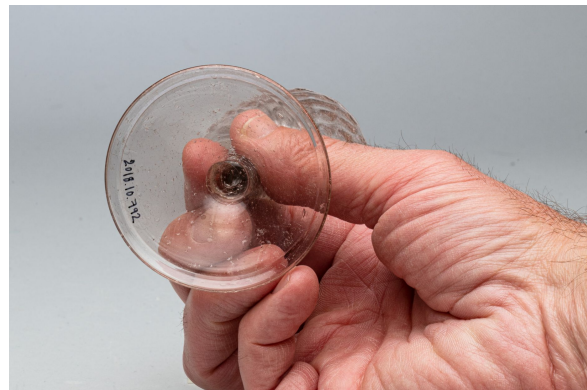


Alcoholic beverage glass

<https://collections.pacmusee.qc.ca/en/objects/alcoholic-beverage-glass-2018-010-0792/>

Collections / From the Conquest to the founding of Canada / alcoholic beverage glass



CC BY-NC-ND 4.0 license

The glass is complete. It consists of three parts: the bowl, the stem and the foot. The bowl is cylindrical, with a wall that flares out at the top, a slightly corrugated rim and a rounded bottom. The stem is solid, cylindrical and straight, tapering towards the bottom. The foot is circular. It has a conical profile and its edge is folded over a good width on the underside. The center of the underside of the foot features a small disk left by the pontil, a tool used by the glassmaker to make the glass. The glass is lightly tinted mauve. It has small cracks on the bowl, and a few elongated air bubbles in the foot ; The decoration is shaped on the stem and molded onto the bowl. The lower half of the bowl is decorated with fine twisted ribs, which later become rhombuses; they are visible on the outer and inner walls. The top of the cup is wavy. The stem is solid, cylindrical and straight, tapering

downwards like an elongated baluster. Its outer surface is decorated with twisted grooves.

Accession Number 2018.10.792

Date 1780 c

Materials colorless chapped glass from France

Measurements 10,6 x 5,269 cm

© Collection Pointe-à-Callière, Paul-Gaston L'Anglais fonds, 2018.010.0792

Photo by René Bouchard