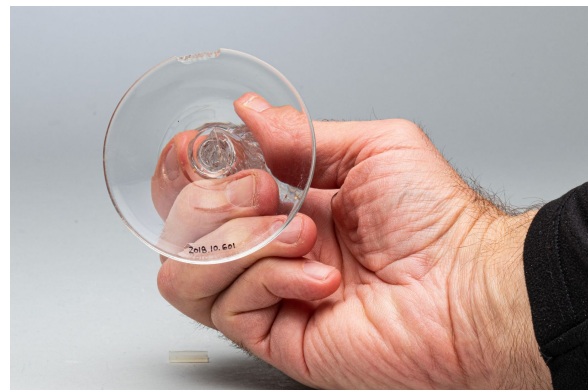


Alcoholic beverage glass reproduction

<https://collections.pacmusee.qc.ca/en/objects/alcoholic-beverage-glass-2018-010-0601/>

Collections / Post-war to present day / alcoholic beverage glass



CC BY-NC-ND 4.0 license

The glass is complete, except for a small chip on the rim of the foot. It comprises a bowl, a stem and a foot. The bowl is flared at the top and has a flared rim; its base is flat. The stem, which is hollow, is straight and cylindrical in cross-section. The foot is circular, with a truncated cone profile at the top. The underside has a slight central circular indentation and a trace of glass pontil; the decoration is blown and stretched. It is visible on the stem and is of the Air twist type. The stem is fitted with two oval knobs and features a central elongated bubble surrounded by stretched, slightly twisted bubbles.

Accession Number 2018.10.601

Date 2000 c

Materials lead-free colorless glass

Measurements 17,6 x 7,572 cm

© Collection Pointe-à-Callière, Paul-Gaston L'Anglais fonds, 2018.010.0601

Photo by René Bouchard