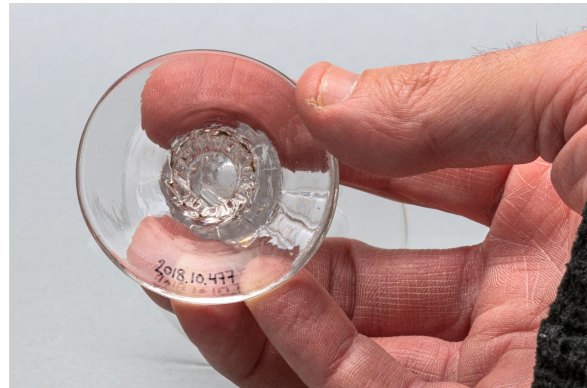


# Alcoholic beverage glass

<https://collections.pacmusee.qc.ca/en/objects/alcoholic-beverage-glass-2018-010-0477/>

Collections / From the Conquest to the founding of Canada / alcoholic beverage glass



CC BY-NC-ND 4.0 license

The glass is complete. It includes a bowl, a stem and a foot. The bowl is conically flared and has a straight rim; its base tapers towards the stem, which is solid. It is composed of a knob resting on a cylindrical segment, which in turn rests on the top of the foot. The foot is circular in shape, with a truncated cone profile at the top. The underside shows a trace of glass pontil ; The decoration is molded. It is geometric. The lower third of the bowl is adorned with slightly inclined flutes with a domed top. They turn into small vertical ribs on the upper portion of the stem, before twisting on the stem and becoming straight again on the top of the foot.

---

Accession Number 2018.10.477

Date 1820 c

Materials British lead-colorless glass

Measurements 10,7 x 5,952 cm

---

© Collection Pointe-à-Callière, Paul-Gaston L'Anglais fonds, 2018.010.0477

Photo by René Bouchard

On display