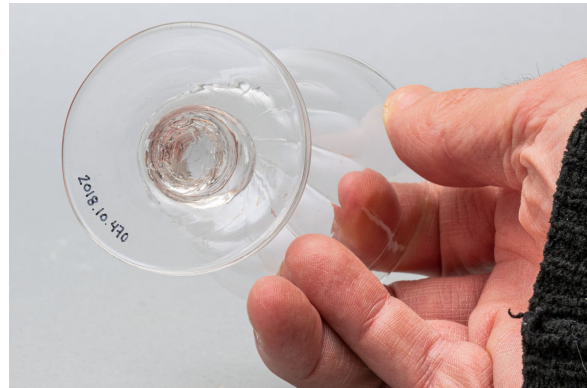


Alcoholic beverage glass

<https://collections.pacmusee.qc.ca/en/objects/alcoholic-beverage-glass-2018-010-0470/>

Collections / From the Conquest to the founding of Canada / alcoholic beverage glass



CC BY-NC-ND 4.0 license

The glass is complete. It includes a bowl, a stem and a foot. The bowl is bucket-shaped, with a flat bottom that bulges inwards, slightly flared sides and an extended rim. The stem is solid and cylindrical, with a flattened central knob and a half-knob at its base. The foot is circular and flat with a central circular bulge. The underside shows a trace of glass pontil. There is a horizontal defect on the bowl; the decoration is molded. It is geometric. The lower third of the bowl is decorated with wide, slightly sloping flutes with domed tops. They twist on the upper part of the stem, then turn into small vertical ribs on the knob and half-knob of the stem, and run down to the foot. The stem has a flattened central knob and a half-knob at its junction with the foot.

Accession Number 2018.10.470

Date 1820 c

Materials British lead-colorless glass

Measurements 10,2 x 6,66 cm

© Collection Pointe-à-Callière, Paul-Gaston L'Anglais fonds, 2018.010.0470

Photo by René Bouchard

On display