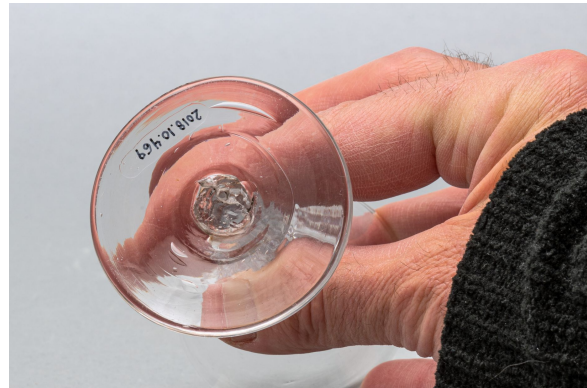


Alcoholic beverage glass

<https://collections.pacmusee.qc.ca/en/objects/alcoholic-beverage-glass-2018-010-0469/>

Collections / From the Conquest to the founding of Canada / alcoholic beverage glass



CC BY-NC-ND 4.0 license

The glass is complete. It includes a bowl, a stem and a foot. The bowl is conically flared and has a straight rim; its base tapers towards the stem, which is solid. It is composed of a knob resting on a cylindrical segment, which in turn rests on a half-knob. The foot is circular with a truncated cone profile at the top. The underside shows a trace of glass pontil ; The decoration is molded. It is geometric. The lower third of the bowl is adorned with slightly inclined flutes with a domed top. These turn into small vertical ribs on the upper knob of the stem, before twisting on the stem and becoming straight again on the lower knob, and extending to the foot.

Accession Number 2018.10.469

Date 1820 c

Materials British lead-colorless glass

Measurements 10,7 x 6,2 cm

© © Collection Pointe-à-Callière, fonds Paul-Gaston L'Anglais, 2018.010.0469

Photo by René Bouchard