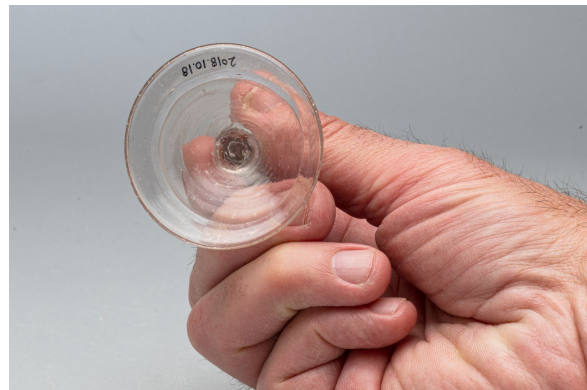


# Alcoholic beverage glass

<https://collections.pacmusee.qc.ca/en/objects/alcoholic-beverage-glass-2018-010-0018/>

Collections / Domestic life / alcoholic beverage glass



CC BY-NC-ND 4.0 license

The glass is complete. It is in three parts: the bowl, the stem and the foot. The bowl is cylindrical, with a wall that flares out at the top, a straight edge and a conical lower part. The stem is solid, cylindrical and straight, tapering towards the sock and topped by a spherical knob. The foot is circular. It has a conical profile and its edge is folded over a good width on the underside. The center of the underside of the foot features a small bulge left by the pontil, a tool used by the glassmaker to make the glass. The glass is colorless, though very lightly tinted mauve. It has small cracks on the bowl and a few elongated air bubbles in the stem; the decoration is shaped on the stem and engraved on the bowl. The stem is solid, cylindrical and straight, tapering towards the sock and topped by a small spherical knob. The upper third of the bowl is engraved with a geometric pattern. A wavy horizontal

line is engraved below the inner rim. Beneath this line is a frieze made up of a horizontal line, followed by a row of horizontal arched lines whose ends overlap; at their ends is a row of small groups of three pearls arranged in a triangle.

---

Accession Number 2018.10.18

Date 1785

Materials colorless chapped glass from France

Measurements 10,9 x 4,556 cm

---

© Collection Pointe-à-Callière, Paul-Gaston L'Anglais fonds, 2018.010.0018

Photo by René Bouchard